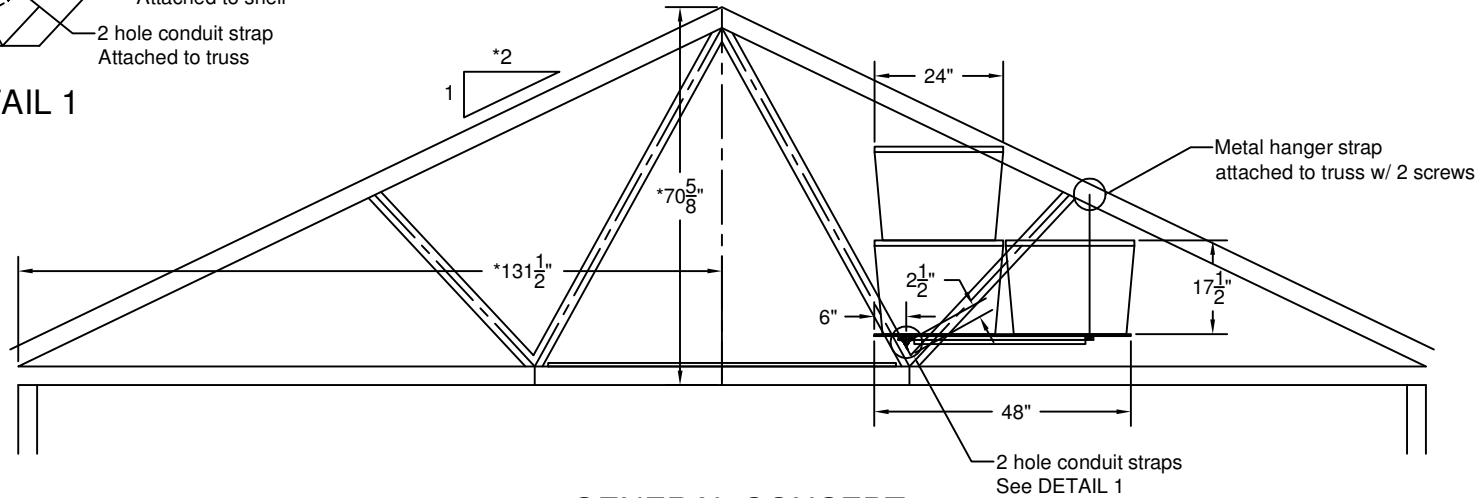


DETAIL 1

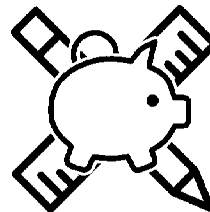


GENERAL CONCEPT

Note: The dimensions with (*) are provided for the sake of scale and are not required.

Notes:

- 1) These plans are intended for building 10 shelves.
- 2) These plans are intended for a truss spacing of 24".
- 3) Pre-drill all holes to prevent splitting of small lumber by screws.
- 4) Do not stand on or overload the shelves.
- 5) The creator of these plans makes no claim as to the safe working load of the shelves and is not liable for any damages or injuries associated with the shelves.
- 6) The builder of the shelves shall be responsible for all workmanship and selection of materials that are adequate and free from defects.
- 7) The user of the shelves shall be responsible for ensuring that the shelves are not stood on and not overloaded.
- 8) The user of the shelves shall be responsible for monitoring the shelves for damage such as splitting or excessive sagging.



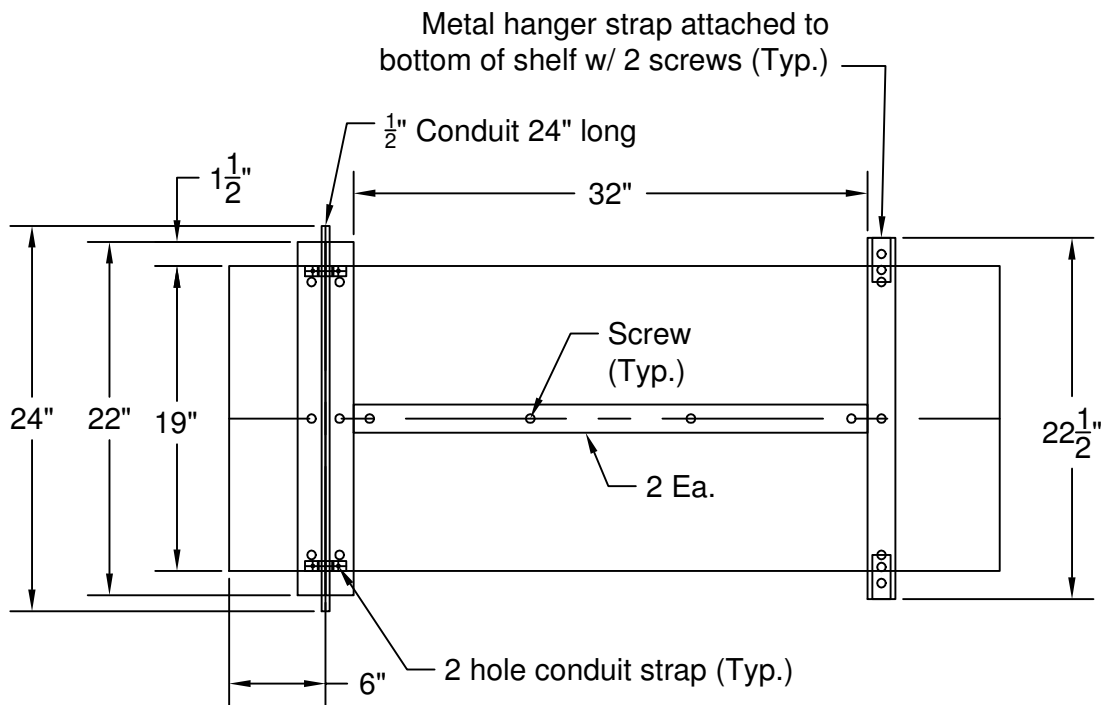
DesigningFI.com

ATTIC SHELVES

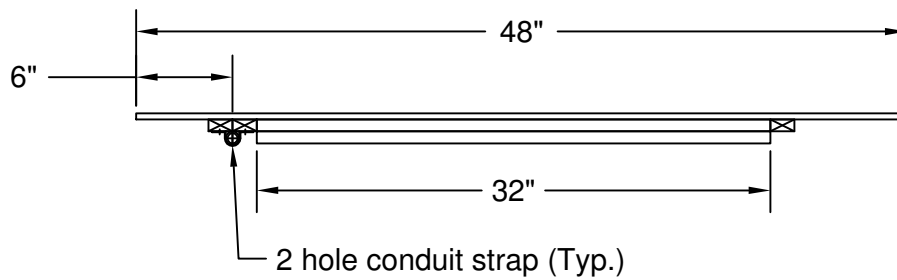
CONCEPT DRAWING

SIZE	FSCM NO.	DWG NO.	REV
SCALE	6/1/2021	SHEET 1 OF 3	

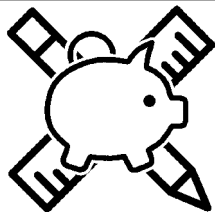
REVISIONS				
ZONE	REV	DESCRIPTION	DATE	APPROVED



PLAN VIEW



ELEVATION VIEW



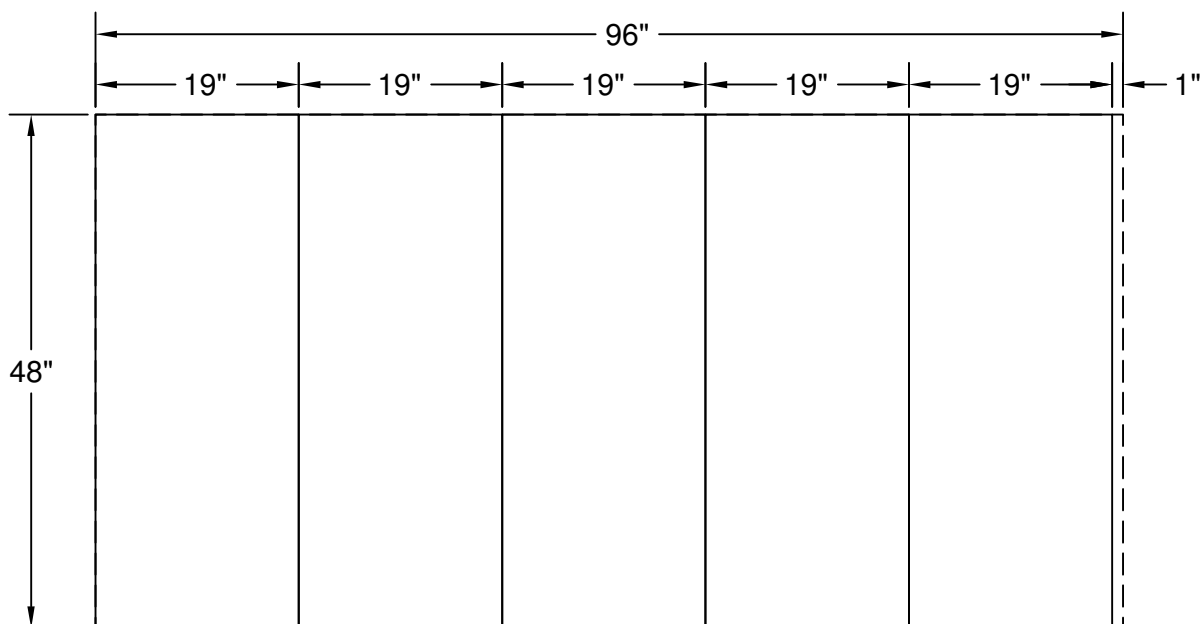
DesigningFI.com

ATTIC SHELVES

GENERAL PLAN

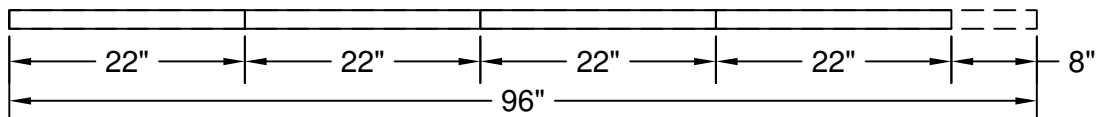
SIZE	FSCM NO.	DWG NO.	REV
SCALE	6/1/2021	SHEET	2 OF 3

REVISIONS				
ZONE	REV	DESCRIPTION	DATE	APPROVED

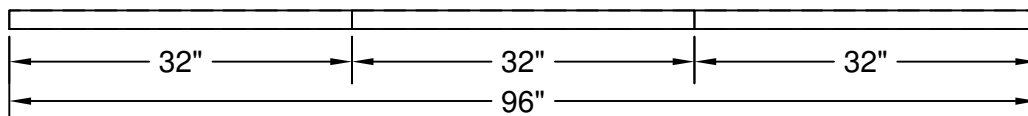


1/2"x4'x8' OSB Plywood (2 REQ.)

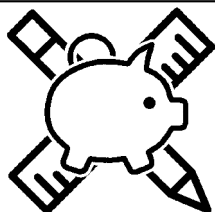
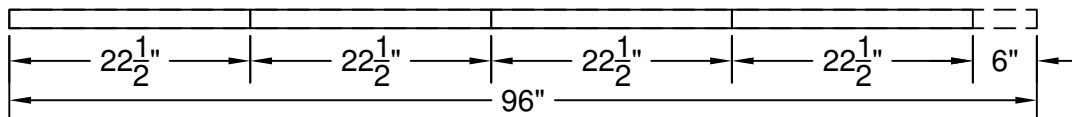
1"x2"x8'
(5 Req.)



1"x2"x8'
(7 Req.)



1"x2"x8'
(3 Req.)



DesigningFI.com

ATTIC SHELVES

CUT DIAGRAM

SIZE	FSCM NO.	DWG NO.	REV
SCALE	6/1/2021	SHEET	3 OF 3







For improvement
stiffness & less sag
use another 1x2
furring strip on top of
this longitudinal
member or replace
with a larger member.



Technique for cutting a straight line on
plywood is to screw a straight piece of
wood to the plywood to use as a guide.

MATERIAL TAKEOFF & APPROXIMATE COST FOR 10 ATTIC SHELVES

Description	Qty	Unit Price	Total Cost
1/2" - 4'x8' OSB Plywood	2	\$ 9.25	\$ 18.50
1"x2" - 8FT Furring Strips	15	\$ 0.82	\$ 12.30
1/2" Two Hole Conduit Strap	40	\$ 0.09	\$ 3.56
1/2" EMT Conduit - 10FT	2	\$ 2.04	\$ 4.08
3/4"x50' metal hanger strap	1	\$ 5.49	\$ 5.49
1 LB box of construction screws	1	\$ 3.79	\$ 3.79
			\$ -
			\$ -
			\$ -
TOTAL			\$ 47.72
TOTAL W/ 8% SALES TAX			\$ 51.54

NO STEP

STENCIL TEMPLATE TO
PUT ON SHELVES